

THEMIS/ARTEMIS

Education and Public Outreach Team

Recent Results

Dr. Laura Peticolas

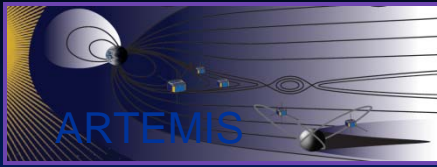
laura@ssl.berkeley.edu

and

Nancy Ali

nancy.ali@ssl.berkeley.edu

March 23, 2012



GEONS Student Publishes Paper Using THEMIS Mission Data



THE NATIONAL HIGH SCHOOL JOURNAL OF SCIENCE

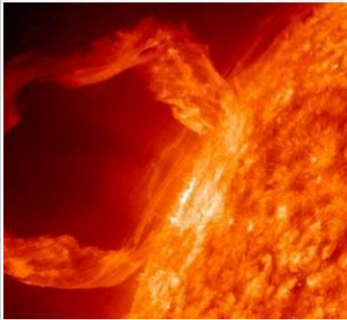
HOME ABOUT CONTACT SUBMIT YOUR WORK WANT TO GET INVOLVED?

Search the archive...

Headline

The Correlation between GOES Flare Classification and the Impact of Solar Flaring on Geomagnetic Field Strength

[20 Jan 2012 | No Comment | 178 views]

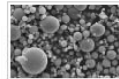


Abstract:

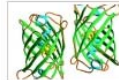
The solar wind can affect Earth's magnetic field. The Geostationary Operational Environment Satellites (GOES) classification system classifies flares based on their X-ray flux. This study investigated a possible correlation between the GOES classifications of solar flares and changes in the strength of the Earth's magnetic field. Data were downloaded for the Bz component of the Interplanetary Magnetic Field (IMF) position and speed (km/sec) on flare dates between 2006 and 2011 using Advanced Composition Explorer (ACE) data archives. Geomagnetic field data were also downloaded from THEMIS data archives for the days ...

Share this: [Share](#)

Featured



Development of a novel hybrid polymer composite with carbon dust and fly ash reinforcements and investigation of its dielectric nature
[8 Feb 2012 | One Comment | 29 views]



Composite Gold-Silver Alloy Nanoparticles for GFP Interactions
[30 Jul 2011 | 3 Comments | 1,023 views]



Identifying New Inhibitors of the Human Metallopeptase Meprin A
[28 Jul 2011 | One Comment | 789 views]



A Study of Menadione-Induced Cytotoxicity Reduction in Yeast Cells by Selected Enzymes
[28 Jun 2010 | 10 Comments | 5,398 views]

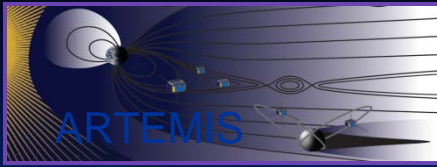
Read Kevin's full article at <http://nhsjs.com/2012/the-correlation-between-goes-flare-classification-and-the-impact-of-solar-flaring-on-geomagnetic-field-strength/>.

For more information about the THEMIS GEONS program, visit <http://cse.ssl.berkeley.edu/artemis/epo-geons-program.html>

Kevin Beach, a high school student at Chippewa Hills High School in Remus, MI, published a paper in the *National High School Journal of Science* about his research using THEMIS data.

Under the direction of science teacher Cris DeWolf, Kevin studied data about the solar wind collected from the THEMIS magnetometer located at Chippewa Hills High School.

Cris DeWolf and his students participate in the Geomagnetic Event Observation Network by Students (GEONS) program in which students use real scientific data to learn about Heliophysics.



Heliophysics Educator Ambassador Reunion Workshop

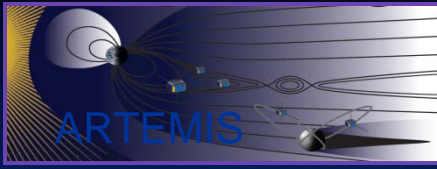


The THEMIS-ARTEMIS Education Program is collaborating with several other NASA missions to present a 2-day Heliophysics Educator Ambassador Reunion workshop in Chicago, IL on July 16-17, 2012.



This reunion workshop will bring together a subset of teachers who attended the HEA workshops in 2009, 2010, and 2011. Thirty teachers will be selected by application to attend the 2012 workshop.

These teachers will receive updated mission information and ongoing support for their work. As part of the workshop agenda, THEMIS and ARTEMIS will be highlighted.



Outreach: Expanding Your Horizons



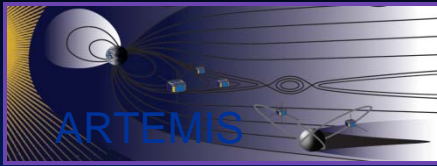
The THEMIS-ARTEMIS E/PO program participated in two outreach events called “Expanding Your Horizons: Motivating Young Women in Math and Science.”

On February 25, 300 girls participated in hands-on magnetism activities at Diablo Valley College in San Ramon, CA.

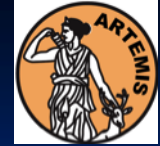


On March 3, an additional 45 girls participated in workshops to make and use spectroscopes at the University of California, Berkeley.

At both events, the participants took home the THEMIS and ARTEMIS postcards.



Upcoming: Website Interviews



- Starting in April, the E/PO team will be interviewing scientists, engineers, grad students, etc. who are involved in the THEMIS/ARTEMIS missions.
- The idea is to highlight the research being done with THEMIS-ARTEMIS data, as well as the variety of types of jobs that are involved with the THEMIS-ARTEMIS missions.
- These interviews will go on the E/PO website which is primarily used by high school teachers and students.
- Given this audience, the interviews will be informal in tone and include advice for students, as well as comments about what the interviewee likes to do outside of work.
- If you would like to be interviewed or would like to recommend someone, please contact nancy.ali@ssl.berkeley.edu.